

POKAYOKE
ポカヨケ

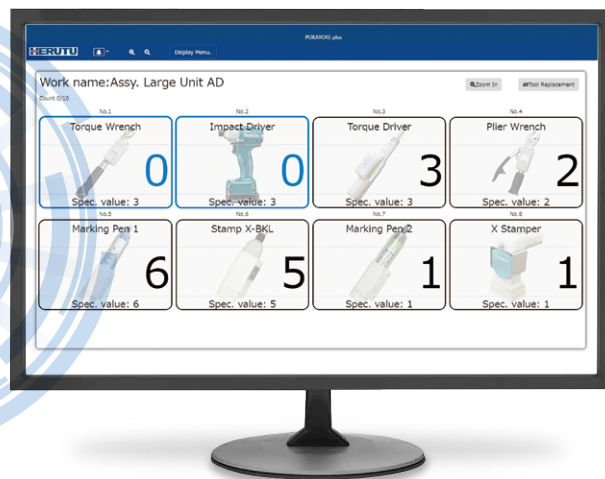
Ensuring Traceability of Tasks and Safety

NEW

Production Process Support Software for Pokayoke Tools V3.00

POKAYOKE plus

When used in combination with a LAN-connectable Pokayoke receiver, this Windows application helps customers ensure the traceability of "working with tools" and "wearing safety protection equipment" for workers in factories.



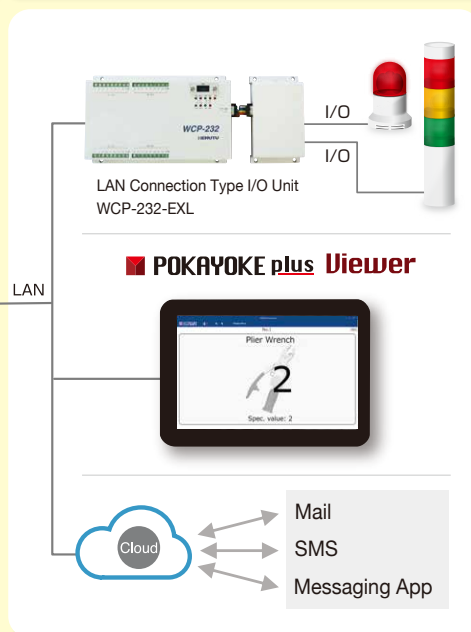
Task Count Management with Pokayoke Compatible Tools



Ensuring Traceability and Grasp of Tasks and Safety in Real-Time



Work Status Notification for Remote Staffs and Manufacturing Sites



New Features of POKAYOKE plus V3.00

Output to Manufacturing Equipment

By connecting a LAN connection type I/O unit WCP-232-EXL to a LAN, the application outputs the task status (PASS/FAIL) of work to the manufacturing equipment.

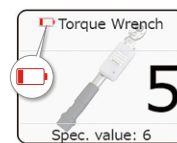
(The maximum number of WCP-232-EXL connections for the "POKAYOKE plus" is 16.)

Other Convenient Features

The application informs the remaining battery level of the Pokayoke compatible transmitter.

Note: Compatible Pokayoke transmitter is required.

By registering photos of Pokayoke compatible tools, it is easier to grasp of the working tools.

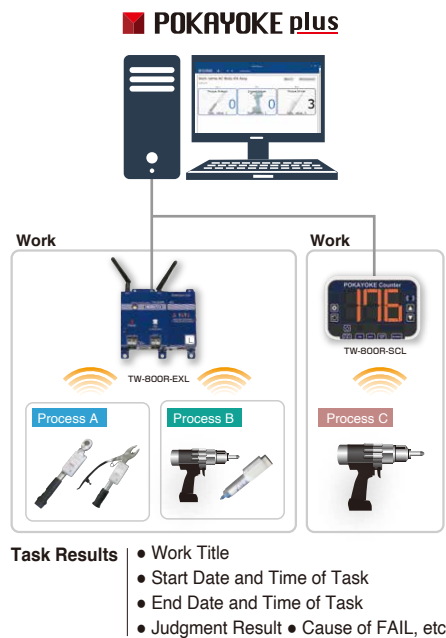


Functional Overview

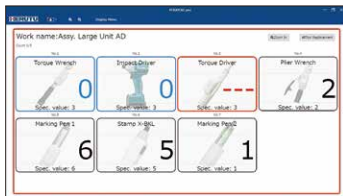
Ensuring Traceability of Tasks

Customers can log and save task results for each work* through the TW-800R-SCL or TW-800R-EXL installed in multiple processes.

*"Work" refers to the content of tasks using one or more tools. For example, the content of a work would be registered as "tasks done 10 times with a cordless power tool, 3 times with the Check Pen S, and 1 time with an approval stamp."



■ Since the system can grasp in real-time the status of task results for each work done or where a "FAIL" occurs, customers can take prompt action to address a process where a mistake has occurred.



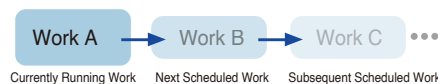
Mistake Prevention (Pokayoke) for Covering Multiple Processes

By linking the "POKAYOKE plus" to the TW-800R-SCL installed for multiple processes, customers can set work execution instructions, counting the number of tasks upwards, etc.



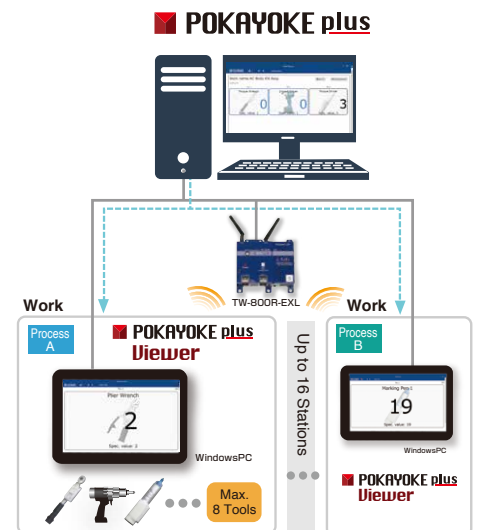
Since customers can register the TW-800R-SCL installed at up to 8 stations for one work, the system can prevent mistakes (pokayoke) for tasks that use up to 8 tools. You can register an unlimited number of works.

■ You can reserve executions for up to 8 works as shown below.



Counter Feature on Computer (POKAYOKE plus Viewer)

By linking the software with the TW-800R-EXL, customers can prevent mistakes (pokayoke) at up to 16 stations by locating a Windows computer with the "POKAYOKE plus Viewer" at the task site.



Since up to 8 tools can be registered for one work, the system can prevent mistakes (pokayoke) for tasks that use up to 8 tools. An unlimited number of works can be registered.

■ The "POKAYOKE plus Viewer" operates based on work execution instructions from the "POKAYOKE plus", and displays the content of tasks in terms of works, the task count, and judgment results.

■ "POKAYOKE plus" Specifications and Operating Environment

| | |
|---------------------|--|
| Supported OS | Windows® 10 32-bit / 64-bit ~ Windows® 11 64-bit |
| CPU | Intel® Core™ i3 2.3GHz or above |
| Required Memory | 4GB or above |
| Resolution | 1366 x 768 (FWXGA) or above |
| HDD | Free space of 1GB or above, excluding data/log |
| Supported Languages | Japanese/English |

■ "POKAYOKE plus Viewer" Specifications and Operating Environment

| | |
|---------------------|--|
| Supported OS | Windows® 10 32-bit / 64-bit ~ Windows® 11 64-bit |
| CPU | Intel Atom® x5-Z8350 1.44GHz or above |
| Required Memory | 4GB or above |
| Resolution | 1366 x 768 (WXGA) or above |
| HDD | Free space of 1GB or above, excluding data/log |
| Supported Languages | Japanese/English |