

Wireless Function Built-in Receiver with Simple Counter Feature

# Pokayoke Counter TW-800R-SC



**Managing the Work Count**

**Corresponding to Works with Various Tools**

**Immediate Pokayoke Start Possible**

- The work count can be managed.
- Judging by the task count of the registered work, the counter informs with a judgment output jack and a buzzer.
- Up to 8 types of task count per work can be registered.
- Various tools, such as check pens, torque wrenches, pliers wrenches, stamps, cordless power tools, etc. can be used in combination with the counter.
- Just a simple button operation enables the setting.



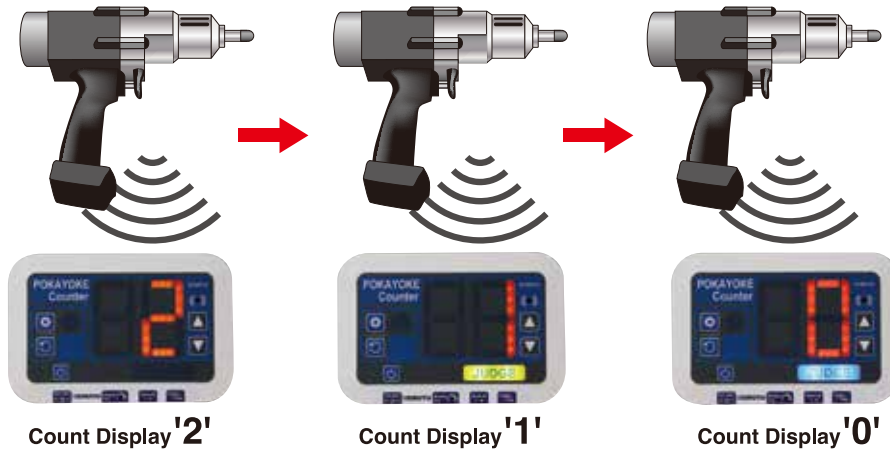
**HERUTU ELECTRONICS CORPORATION**

62-1 Toyooka-cho, Kita-ku, Hamamatsu,  
Shizuoka, 433-8103 Japan  
TEL: +81-53-438-3555 / FAX: +81-53-438-3411  
URL: <http://www.herutu.co.jp/en/>  
Email: [info@herutu.co.jp](mailto:info@herutu.co.jp)

Please contact your nearest distributor.

### Managing the Work Count

Tool (1 Transmitter): the work count can be managed with 1 Pokayoke counter.  
(Task Example) Case of the Task Count of a Work Set as '2'



Count Display '2'

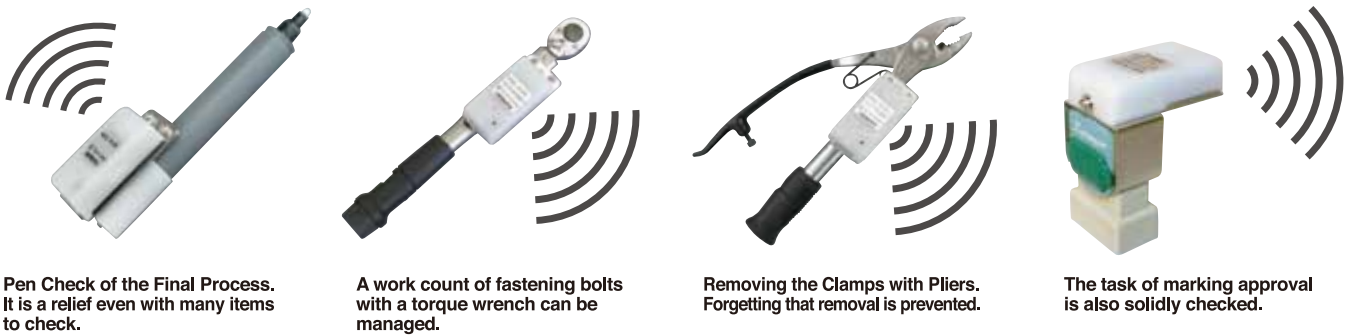
Count Display '1'

Count Display '0'

**Completed!**  
PASS output and a buzzer informing of the result.

### Corresponding to Tasks with Various Tools

Various tools can be used in combination with the counter.  
\* We also consider custom-ordered products for cordless power tools, special tools, etc.



Pen Check of the Final Process. It is a relief even with many items to check.

A work count of fastening bolts with a torque wrench can be managed.

Removing the Clamps with Pliers. Forgetting that removal is prevented.

The task of marking approval is also solidly checked.

### Immediate Pokayoke Start Possible

[Just a simple button operation enables the setting.]



A registered work can be selected by an external input.  
\* Please use either a Work-Select input cable or switch box.

<Work Complete>

[Output Feature]

<Overcount>



When the task count of the registered work becomes '0', the counter outputs PASS.  
If the counter overcounts, the counter outputs FAIL.



※ Please use the judgment output cable.

### [Specifications (TW-800R-SC)]

Display	7-Segment LED 2-Digit (Letter Height: 55 mm (2.2")) Judgment LED : Blue/Yellow/Red RXLED: Green/Red/Blue
Button(s)	POWER / SETTING / RESET / ▲ / ▼
Volume	For buzzer volume adjustment
Power Source	AC 100V (AC adapter included)
Input(s)	Work-Select Input: 3-Bit+COM (Photo Coupler Input)
Output(s)	Judgment Output (PASS / FAIL) Jack (Power Transistor Output DC24V/0.1A)
External Dimensions	(W x H x D) 150 x 100 x 30 mm (5.9 x 3.9 x 1.2")
Weight	Approx. 250 g (8.8 oz)
Frequency Band	2,403 MHz-2,478 MHz
Antenna Power	Max. 2.1mW

### Options



Work-Select Input Cable  
TW-SC24-4



Judgment Output Cable  
TW-SC35-3



Mounting Bracket  
TW-SCDS01



Work-Select Switch Box  
TW-WS-02