

Wireless Call Systems Specifications List

Wireless Segment Specifications

Item	Specifications
Standards	FCC:Part15 Sub Part C §15.247 IC:RSS-210
Frequency Band	920 MHz-928 MHz
Modulation Method	LoRa Technology
Communication Method	Half Duplex

\* The actual wireless communication distance may vary depending on the environment in use.

AN920R (Large-Sized 8-Indicator Type)

Indicator Element	8 Indicator Lamps (Indicator Dimensions (H x W) 150 x 100 mm (5.9 x 3.9")) Double-Sided Indicator * 3-Color LED (Orange, Red, Green)
Output(s)	4 Open Collector Outputs (Max. Rated Load AC/DC 35V 50mA) 1 Relay Output (Max. Rated Load AC/DC 30V 0.5A)
Input(s)	2 Non-voltage Contact-Input 1 Reset All / 1 Reset Output
Power Source	AC100-240V (Using included AC Adapter)
Wattage	Max. 90W
External Dimensions	(W x H x D) 1,000 x 300 x 80 mm (39.4 x 11.8 x 3.1") (except any protruding object such as an antenna)
Weight	Approx. 8 kg (17.6 lb)
Operating Environment	Temperature: 0-40°C (32-104°F) Humidity: 85% or less (without condensation)
Code Settings	1,600 Configurations (Channel Numbers:1-16 x Set Numbers:0-9 x Unit Numbers:0-9)

\* The model with a speaker is AN920R-MRD.

BN920R (Number Indicator Type)

Indicator Element	4-Digit Indicator, High Brightness Red, 7-Segment LED, Single-Sided Indicator, Indicator Letter Dimensions (H x W) 110 x 60 mm (4.3 x 2.4")
Output(s)	2 Open Collector Outputs (Max. Rated Load AC/DC 35V 50mA) 2 Relay Outputs (Max. Rated Load AC125V 0.5A / DC 24V 1A)
Input(s)	Optional Keyboard Unit (KE-2)
Power Source	AC100-240V (using included AC adapter)
Wattage	Max. 25W
External Dimensions	(W x H x D) 600 x 290 x 80 mm (23.6 x 11.4 x 3.1") (except any protruding object such as an antenna)
Weight	Approx. 5.5kg(12.1lb)
Operating Environment	Temperature: 0-50°C (32-122°F) Humidity: 85% or less (without condensation)
Code Settings	160 Configurations (Channel Numbers:1-16 x Set Numbers:0-9)

\* The model with the double-sided indicator specification is BNW926R.

\* The models with a speaker are BN920R-MRD and BNW920R-MRD.

AN920T (Transmitter)

Indicator Element	1 Red LED(Tx) 1 Green LED(Rx)
Input(s)	4 Push-Button 4 External-Input
Power Source	AC 100-240V (Using included AC Adapter)
External Dimensions	(W x H x D) 150 x 85 x 25 mm (5.9 x 3.3 x 1.0")
Weight	Approx.0.2kg(0.4lb)
Operating Environment	Temperature: 0-50°C (32-124°F) Humidity: 20-85% (without condensation)
Code Settings	16,000 Configurations (Channel Numbers:1-16 x Set Numbers:0-9 x Unit Numbers:0-9 x ID:0-9)

AN920RM (Medium-Sized 8-Indicator Type)

Indicator Element	8 Indicator Lamps (Indicator Dimensions (H x W) 50 x 90 mm (2.0 x 3.5") Double-Sided Indicator * 3-Color LED (Orange, Red, Green)
Output(s)	4 Open Collector Outputs (Max. Rated Load AC/DC 35V 50mA) 1 Relay Output (Max. Rated Load AC/DC 30V 0.5A)
Input(s)	2 Non-voltage Contact-Input 1 Reset All / 1 Reset Output
Power Source	AC100-240V (Using included AC Adapter)
Wattage	Max. 33W
External Dimensions	(W x H x D) 600 x 300 x 80 mm (23.6 x 11.8 x 3.1") (except any protruding object such as an antenna)
Weight	Approx. 5.8 kg (12.8 lb)
Operating Environment	Temperature: 0-40°C (32-104°F) Humidity: 85% or less (without condensation)
Code Settings	1,600 Configurations (Channel Numbers:1-16 x Set Numbers:0-9 x Unit Numbers:0-9)

\* The model with a speaker is AN920RM-MRD.

AN920RH (Large-Sized 4-Indicator Type)

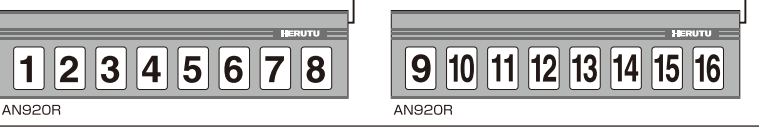
Indicator Element	4 Indicator Lamps (Indicator Dimensions (H x W) 150 x 100 mm (5.9 x 0.4")) Double-Sided Indicator * 3-Color LED (Orange, Red, Green)
Output(s)	4 Open Collector Outputs (Max. Rated Load AC/DC 35V 50mA) 1 Relay Output (Max. Rated Load AC/DC 30V 0.5A)
Input(s)	2 Non-voltage Contact-Input 1 Reset All / 1 Reset Output
Power Source	AC100-240V (using included AC Adapter)
Wattage	Max. 44W
External Dimensions	(W x H x D) 600 x 300 x 80 mm (23.6 x 11.8 x 3.1") (except any protruding object such as an antenna)
Weight	Approx. 5.3 kg (11.7 lb)
Operating Environment	Temperature: 0-40°C (32-104°F) Humidity: 85% or less (without condensation)
Code Settings	1,600 Configurations (Channel Numbers:1-16 x Set Numbers:0-9 x Unit Numbers:0-9)

\* The model with a speaker is AN920RH-MRD.

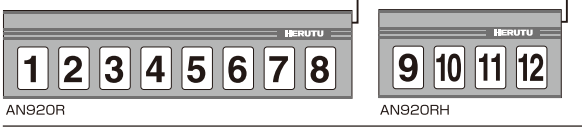
The indicator numbers are changeable. Please specify the numbers.

Examples

●Case of Calling from 16 Sites



●Case of Calling from 12 Sites



# Wireless Call Systems

YOBIDASHI  
ヨビダシ

## AN920 / BN920



**HERUTU**

HERUTU ELECTRONICS CORPORATION

422-1 Higashimikata-cho, Kita-ku, Hamamatsu,  
Shizuoka, 433-8104 Japan  
TEL: +81-53-438-3555 / FAX: +81-53-438-3411  
URL: <https://www.herutu.co.jp/en/>  
Email: [info@herutu.co.jp](mailto:info@herutu.co.jp)

Please contact your nearest distributor.

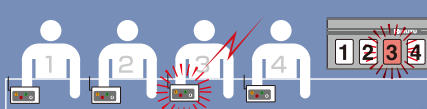
**HERUTU**



# Making all sorts of calls easily identifiable

## Wireless Call Systems

### Content and Reason for the Call



- To inform of a shortage of production parts
- To transport finished products
- To alert of an unusual occurrence
- To report AGV (automatic guided vehicle) trouble
- To stop a processing machine

### People and Objects Being Called



- Staff  
(Production Line Leaders / Maintenance Staff)
- Forklift
- Tow Tractor
- AGV

## AN920R

### Large-Sized 8-Indicator Type

Double-Sided  
Indicator



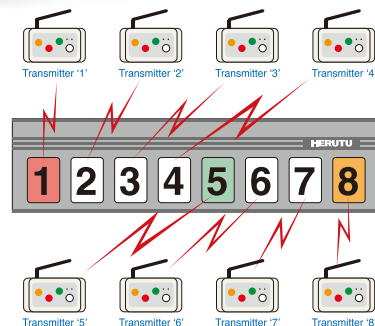
Communication Distance:  
approx. 500m(547yd) (Indoor)  
approx. 1 km (0.62 mi.) (Line of Sight)

1-Indicator Dimensions  
(H x W) 150 x 100 mm (5.9 x 3.9")

The AN920R series illuminates each indicator independently for corresponding calls from the transmitter AN920T. Each transmitter corresponds to one of the indicators. Because the color of each indicator will change according to the input signal of the transmitter, a separate meaning can be assigned per color.

### Configuration

AN920R can be used in combination with eight AN920T transmitters.



### Option

In addition to the indicator lights, a speaker can be installed that enables sound notifications. A different melody for each indicator color can be configured (when multiple colors are illuminated, the melody is selected according to the priority order).



AN920R-MRD

## AN920T (Transmitter)

### Inputs

Each transmitter corresponds to an indicator on the receiver. LEDs illuminate each indicator on the receiver a particular color, according to the corresponding input from the transmitter. The terminal block input illuminates in the same way.  
\* The color of each input represents the color of illumination of the corresponding indicator on the receiver, except the white input turning off the corresponding indicator.  
■ 4 Push-Button: Orange, Red, Green, White (Off)  
■ 4 External-Input: Orange, Red, Green, White (Off)

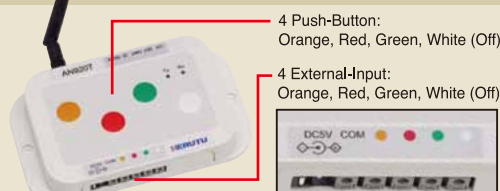
\* An AC Adapter is the power source.

Since the settings can be changed easily with switches, relocations by customers can be accommodated easily.



4 Push-Button:  
Orange, Red, Green, White (Off)

4 External-Input:  
Orange, Red, Green, White (Off)



## AN920RH

### Large-Sized 4-Indicator Type

Double-Sided  
Indicator

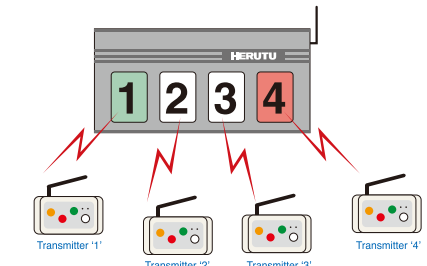


Communication Distance:  
approx. 500m(547yd) (Indoor)  
approx. 1 km (0.62 mi.) (Line of Sight)

1-Indicator Dimensions (H x W) 150 x 100 mm (5.9 x 3.9")

### Configuration

AN920RH can be used in combination with four AN426T transmitters.



### Option

In addition to the indicator lights, a speaker can be installed that enables sound notifications. A different melody for each indicator color can be configured.



AN920RH-MRD

## AN920RM

### Medium-Sized 8-Indicator Type

Double-Sided  
Indicator

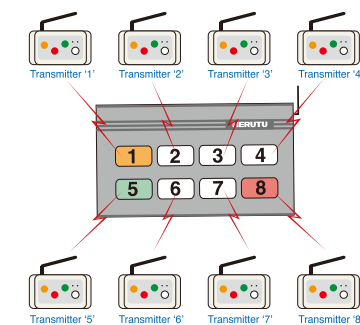


Communication Distance:  
approx. 500m(547yd) (Indoor)  
approx. 1 km (0.62 mi.) (Line of Sight)

1-Indicator Dimensions (H x W) 50 x 90 mm (2.0 x 3.5")

### Configuration

AN920RM can be used in combination with eight AN426T transmitters.



### Option

In addition to the indicator lights, a speaker can be installed that enables sound notifications. A different melody for each indicator color can be configured.

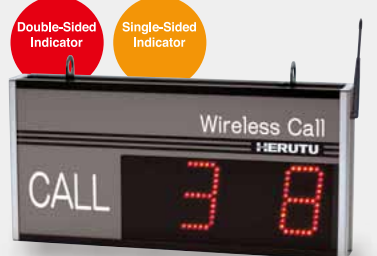


AN920RM-MRD

## BN920R / BNW920R

### Number Indicator Type

The BN920R series illuminates numbers corresponding to calls from the transmitter AN920T. This series can respond to calls from up to 64 transmitters. Numbers corresponding to calls that are not displayed are stored internally for displaying later.

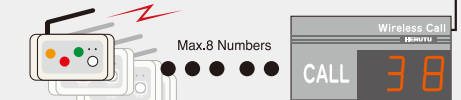


Communication Distance:  
approx. 500m(547yd) (Indoor)  
approx. 1 km (0.62 mi.) (Line of Sight)

1-Character Height 110 mm (4.3")

### Configuration

1-Digit Type Supporting up to 8 Transmitters  
Since the indicator numbers corresponding with calls are a single digit, calls from up to 4 transmitters can be indicated simultaneously.



2-Digit Type Supporting up to 64 Transmitters  
Since the indicator numbers corresponding with calls are a double-digit, calls from up to 2 transmitters can be indicated simultaneously.



### Option

In addition to the indicator lights, a speaker can be installed that enables sound notifications. A different melody for each indicator color can be configured.



BN920R-MRD