

Production Process Support Software for Pokayoke Tools

The logo for POKAYOKE plus Viewer. It features a red square icon with a white geometric shape inside, followed by the word "POKAYOKE" in bold black uppercase letters, "plus" in a smaller red lowercase font with a red underline, and "Viewer" in a large, bold, red serif font.

INSTRUCTION MANUAL V3.10

Please use this Instruction manual correctly on reading well.
Please keep it carefully to be able to read immediately, when required.



Before using

Thank you for purchasing the product.

Please read this Instruction Manual carefully and use this product correctly.

After reading the Instruction Manual, keep it handy and refer to it at any time when needed.

This product is protected by laws and international treaties on copyright.

Please note that reproduction of all or part of this product or distribution of copies without permission violates copyright.

Be sure to read the license agreement of “POKAYOKE plus” in this document.

“POKAYOKE plus Viewer” END USER LICENSE AGREEMENT

IMPORTANT: PLEASE READ THE TERMS AND CONDITIONS OF THIS LICENSE AGREEMENT (“LICENSE AGREEMENT”) CAREFULLY BEFORE USING THE SOFTWARE (AS DEFINED BELOW). HERUTU ELECTRONICS CORPORATION IS WILLING TO LICENSE THE SOFTWARE TO YOU AS THE INDIVIDUAL, THE COMPANY, OR THE LEGAL ENTITY THAT WILL BE UTILIZING THE SOFTWARE (REFERENCED BELOW AS “YOU” OR “YOUR”) ONLY ON THE CONDITION THAT YOU ACCEPT ALL OF THE TERMS OF THIS LICENSE AGREEMENT. THIS IS A LEGAL AND ENFORCEABLE CONTRACT BETWEEN YOU AND HERUTU ELECTRONICS CORPORATION. BY CLICKING THE “I AGREE” OR “YES” BUTTON OR OTHERWISE INDICATING ASSENT ELECTRONICALLY, OR LOADING THE SOFTWARE, YOU AGREE TO THE TERMS AND CONDITIONS OF THIS LICENSE AGREEMENT. IF YOU DO NOT AGREE TO THESE TERMS AND CONDITIONS, CLICK THE “CANCEL” OR “NO” OR “CLOSE WINDOW” BUTTON OR OTHERWISE INDICATE REFUSAL, MAKE NO FURTHER USE OF THE SOFTWARE.

1. License:

The software (including any accompanying features) and documentation (including any product packaging) (the “Documentation”), that accompanies this License Agreement (collectively the “Software”) is the property of HERUTU ELECTRONICS CORPORATION, and is protected by copyright law. Although HERUTU ELECTRONICS CORPORATION continues to own the Software, after Your acceptance of this License Agreement You will have certain rights to use the Software. This License Agreement governs any releases, revisions, updates or enhancements to the Software that HERUTU ELECTRONICS CORPORATION may make available to You. Your rights and obligations under this License Agreement with respect to the use of this Software are as follows.

- a. use one copy of the Software on a single computer;
- b. use the Software in accordance with any additional permitted uses which may be set forth below;

You may not, nor may you permit any other person to:

- a. reproduce, sublicense, rent, lease, resell or distribute any portion of the Software;
- b. reverse engineer, decompile, disassemble, modify, change, translate, make any attempt to discover the source code of the Software or create derivative works from the Software;
- c. use the Software in any manner that is not permitted pursuant to this License Agreement;

2. Software Feature Updates:

You shall have the right to receive new features to the Software as HERUTU ELECTRONICS CORPORATION, in its sole discretion, makes such features available with the Software. HERUTU ELECTRONICS CORPORATION continually strives to improve the usability and performance of its products and services. In order to optimize the Software, HERUTU ELECTRONICS CORPORATION may, at its discretion and without notice, add, modify or remove features from the Software at any time.

3. Warranty:

TO THE EXTENT ALLOWED BY LAW, THE SOFTWARE IS PROVIDED TO YOU "AS IS" WITHOUT WARRANTIES OR CONDITIONS OF ANY KIND, WHETHER ORAL OR WRITTEN, EXPRESS OR IMPLIED. HERUTU ELECTRONICS CORPORATION SPECIFICALLY DISCLAIMS ANY IMPLIED WARRANTIES OR CONDITIONS OF MERCHANTABILITY, SATISFACTORY QUALITY, NON-INFRINGEMENT AND/OR FITNESS FOR A PARTICULAR PURPOSE.

4. Limitation of Liability:

IN NO EVENT SHALL HERUTU ELECTRONICS CORPORATION BE LIABLE TO YOU FOR ANY SPECIAL, CONSEQUENTIAL, INDIRECT, OR SIMILAR DAMAGES, INCLUDING ANY LOST PROFITS OR LOST DATA ARISING OUT OF THE USE OR INABILITY TO USE THE SOFTWARE EVEN IF HERUTU ELECTRONICS CORPORATION HAS BEEN ADVISED OF THE POSSIBILITY OF SUCH DAMAGES.

EXCEPT FOR DAMAGES INCURRED BY YOU ARISING FROM INTENTIONAL ACT OR GROSS NEGLIGENCE SOLELY ON THE PART OF HERUTU ELECTRONICS CORPORATION, IN NO CASE SHALL HERUTU ELECTRONICS CORPORATION'S LIABILITY EXCEED THE PURCHASE PRICE WHICH YOU PAID. The disclaimers and limitations set forth above shall apply regardless of whether You accept the Software.

5. Governing Laws:

This License Agreement shall be governed by the laws of Japan, and the Shizuoka District Court shall have exclusive primary jurisdiction with respect to all disputes arising with respect thereto.

6. General:

This License Agreement is the entire agreement between You and HERUTU ELECTRONICS CORPORATION relating to the Software and: (i) supersedes all prior or contemporaneous oral or written communications, proposals, and representations with respect to its subject matter; and (ii) prevails over any conflicting or additional terms of any quote, order, acknowledgment, or similar communications between the parties. Notwithstanding the foregoing, nothing in this License Agreement shall diminish any rights You may have under existing consumer protection legislation or other applicable laws in Your jurisdiction that may not be waived by contract. This License Agreement shall terminate upon Your breach of any term contained in this License Agreement and You shall cease use of and destroy all copies of the Software and Documentation. The disclaimers of warranties and

damages and limitations on liability shall survive termination. This License Agreement may only be modified by the Documentation or by a written document that has been signed by both You and HERUTU ELECTRONICS CORPORATION. Should You have any questions concerning this License Agreement, or if You desire to contact HERUTU ELECTRONICS CORPORATION for any reason, please visit the HERUTU ELECTRONICS CORPORATION's homepage at <https://www.herutu.co.jp/en/>.

Table of Contents

1. Introduction	1
1-1. Overview	1
1-2. System Requirements	3
2. Mounting Method	3
2-1. Device Configuration	3
2-2. Network Settings	4
3. POKAYOKE plus Viewer	5
3-1. Installation	5
3-2. POKAYOKE plus Viewer Startup	7
3-3. License Registration to POKAYOKE plus	7
3-4. Flow of POKAYOKE plus Viewer	8
3-5. Screen Configuration	9
3-6. Menu Configuration	10
3-7. Default Settings	10
3-8. Start a Work or Work Sequence	13
3-9. Product Information	20
3-10. Exit POKAYOKE plus	20
4. Troubleshooting	21

1. Introduction

1-1. Overview

Explanation of terms

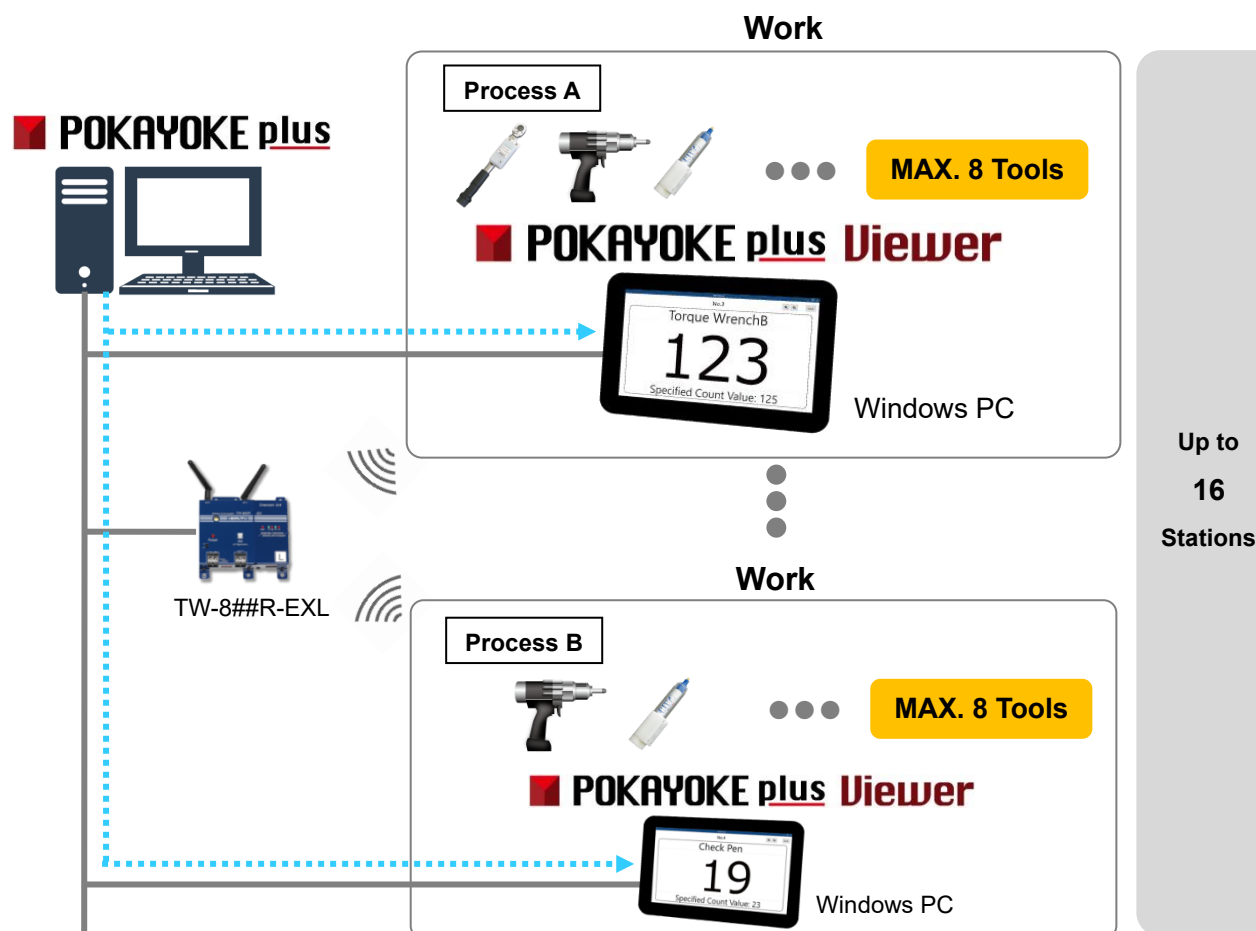
Term	Description
Tool	Tools or safety protectors with POKAYOKE transmitter "TW-800T"," HRF-2402", etc. installed.
Receiver	<p>Our POKAYOKE receiver with LAN connection.</p> <p>A device for receiving the signal wirelessly transmitted from the transmitter attached to the tool and transmitting the signal to the external device being connected via LAN.</p> <p>Compatible models:</p> <p>(1) Simple Pokayoke Counter TW-800R-SCL</p> <p>(2) LAN Connection Type Pokayoke Receiver TW-800R-EXL / TW-820R-EXL(hereinafter called "TW-8##R-EXL")</p>
Work	"Work" refers to the content of tasks using one or more tools. For example, you would register the content of a work as "tasks done 10 times with a cordless power tool, 3 times with the Check Pen S, and 1 time with an approval stamp."
Work sequence	<p>Reservation for work executions is called a work sequence.</p> <p>You can reserve executions for up to 8 works as shown below.</p> <div data-bbox="477 1238 1299 1408" data-label="Diagram"> <pre> graph LR A[Work A] --> B[Work B] B --> C[Work C] C --> D[...] </pre> <p>Currently Running Work Next Scheduled Work Subsequent Scheduled Work</p> </div> <p>The number of repetition times (1-99999 times) can be set for each work. Set the number of repetition times according to the number of manufacturing products.</p>

Tools available for POKAYOKE plus

Tool type	Description
Tool	Compatible with various tools used in the production processes. Check Pen S, Cordless Power Tool, Torque Wrench, Pliers Wrench, Approval Stamp, Cable Tie Gun, Riveter, Grease Gun and more
Safety protectors	Can be used with a hard hat. Wearing status is OK ... Wearing safety protectors correctly. Wearing status is NG ... Wearing safety protectors not correctly. For use with a hard hat, NG wearing status includes: The chin strap comes off. A hard hat is not worn.

POKAYOKE plus Viewer is a Windows-compatible application equipped with a counter feature of POKAYOKE plus. When linking POKAYOKE plus to a POKAYOKE receiver with no counter feature TW-8##R-EXL, the counts can be displayed at up to 16 stations by locating a Windows computer with POKAYOKE plus Viewer at your task site.

POKAYOKE plus Viewer runs based on work execution instructions from POKAYOKE plus. POKAYOKE Viewer cannot accomplish the counter feature on its own. Be sure to use POKAYOKE plus Viewer along with POKAYOKE plus. For details of POKAYOKE plus, refer to "POKAYOKE plus Instruction manual".



1-2. System Requirements

The following system requirements are necessary to use this application.

Operation is not guaranteed for all computer environments. Other applications running in the background may affect operation.

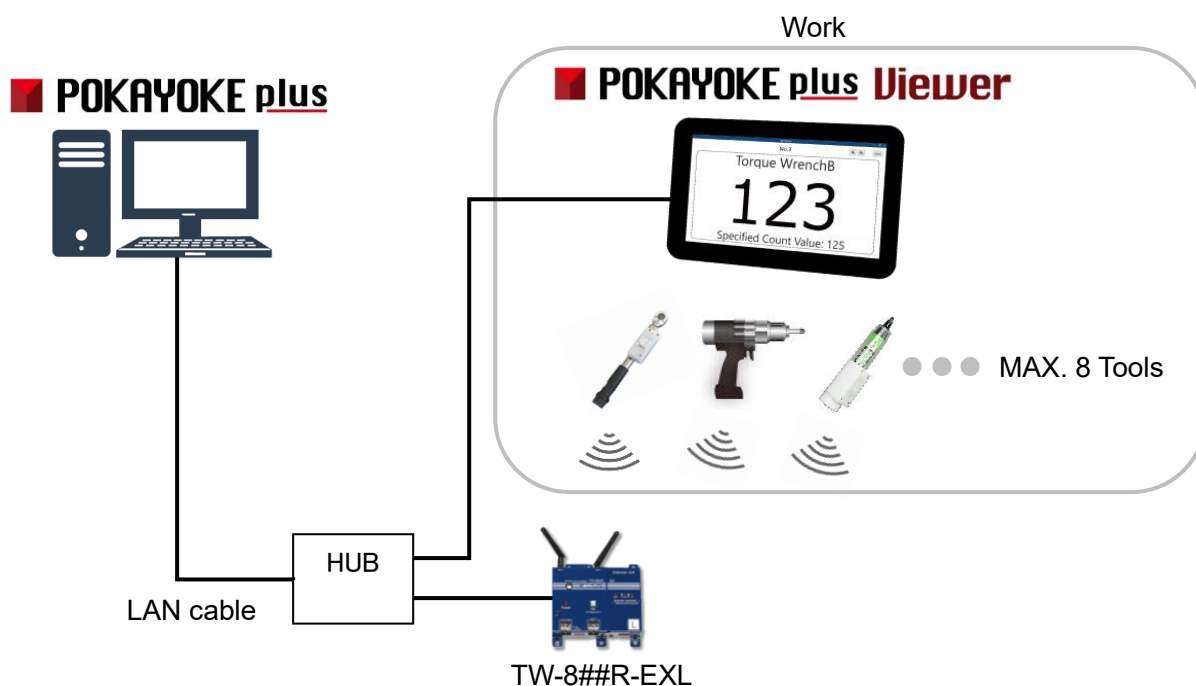
Supported OS	Windows® 10 32-bit / 64-bit Windows® 11 64-bit (*)
CPU	Intel Atom® x5-Z8350 1.44GHz or above (*)
Memory	4GB or above (*)
Screen Resolution	1280×800(WXGA) or above
Storage free space	1GB (Excluding data / log)
Network Adapter	100Mbps or above(one or more network adapters available)
.NET Framework	4.6 or later installed

* For Windows 11, the minimum system requirements of Windows 11 apply additionally.

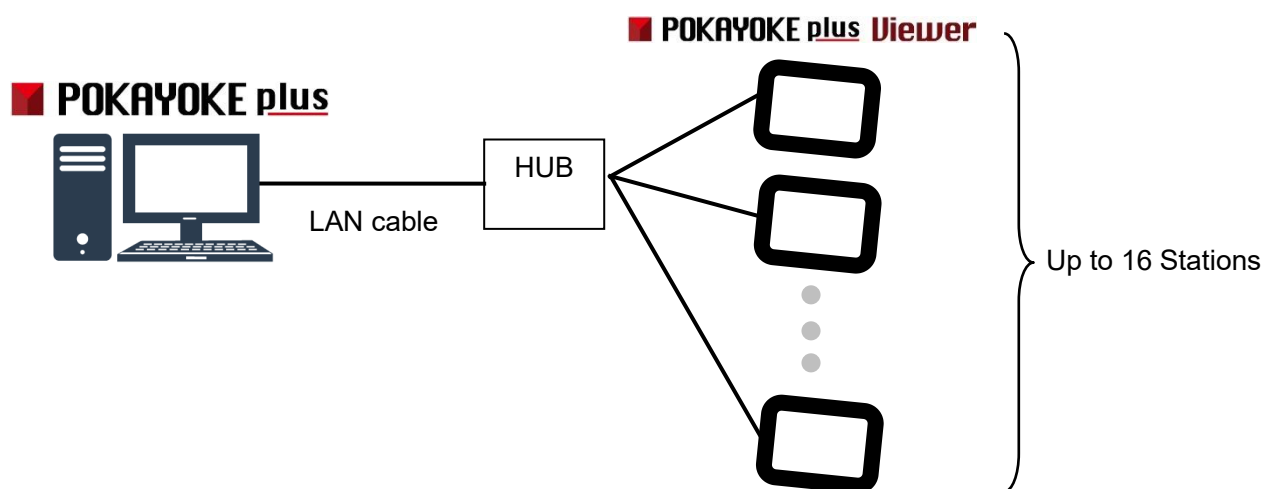
2. Mounting Method

2-1. Device Configuration

- Connect the LAN connector of the receiver to the switching hub or the PC's LAN connector with the cable. Please use the cable of the category 5 or higher standard.
- The receiver is not equipped with AutoMDI/MDI-X function to determine the LAN port. To connect the receiver to the PC's LAN port directly, use a cross-wired LAN cable.



POKAYOKE plus manages the license information of POKAYOKE plus Viewer. Up to 16 POKAYOKE plus Viewer can be used in conjunction with one POKAYOKE plus.



2-2. Network Settings

POKAYOKE plus Viewer communicates with POKAYOKE plus via LAN. Configure the network settings of the computer with POKAYOKE plus Viewer according to your network environment. For details of the settings, such as IP address, contact the network administrator.

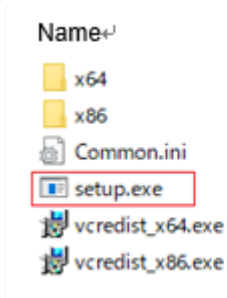
3. POKAYOKE plus Viewer

3-1. Installation

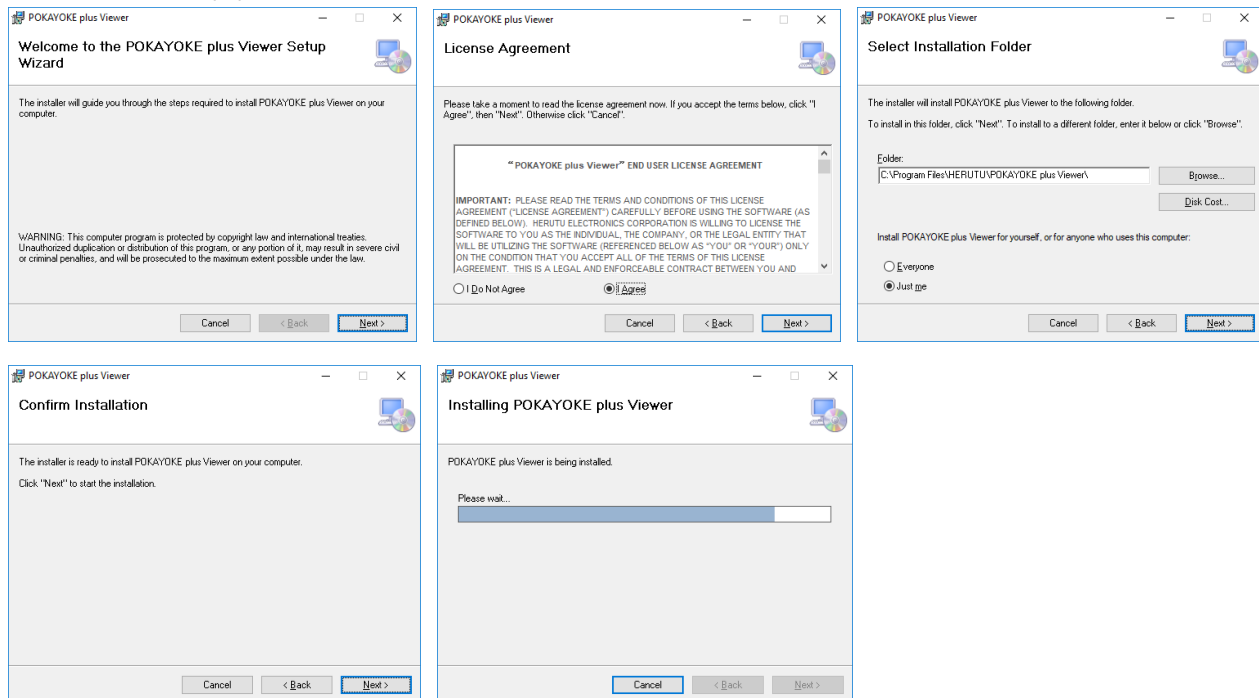
Install the application according to the following procedure.

- ① Insert the CD-ROM into the PC.

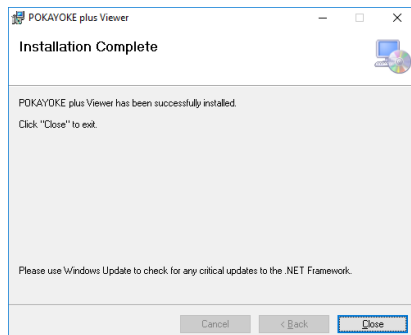
From “Explorer”, double click the “setup” file in the Installer folder in the CD-ROM drive.



- ② Click “Next (N) >” and follow the instructions on the screen.



- ③ When the “Installation is completed” screen is displayed, installation of “setup” file is completed.



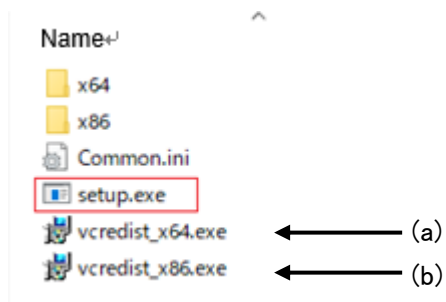
④ Install Visual C++ redistributable runtime packages.

◆When using a 64bit OS.

Directly double click “vcredist_x64”(a) file in the Installer folder of CD-ROM drive.

◆When using a 32bit OS.

Directly double click “vcredist_x86”(b) file in the Installer folder of CD-ROM drive.



Installation is now completed.

Software Updates

Customers who purchased POKAYOKE plus / POKAYOKE plus Viewer can download the latest version of the application free of charge from the download page of the website.

Previous Version: V1.0X、V2.00、V3.00

Latest Version : V3.01

Follow the steps below to update.

- ① The downloaded file is ZIP compressed, so decompress it.
- ② Open the Update folder and double-click the "setup" file directly.
- ③ Click “Next (N) >” and follow the instructions on the screen.
- ④ When the “Installation is completed” screen is displayed, installation is completed.

【Cautions for use】

The database of POKAYOKE plus Viewer is expanded with the addition of functions in V3.01. Therefore, if you upgrade from V1.0X or V2.00 to V3.01, you cannot revert to the original version. The registration information of V1.0X or V2.00 can be used as it is in V3.01.

3-2. POKAYOKE plus Viewer Startup

When the installation is completed, start up POKAYOKE plus Viewer from the icon on the desktop or from Program.



3-3. License Registration to POKAYOKE plus

POKAYOKE plus manages the license information of POKAYOKE plus Viewer. Registering the license of POKAYOKE plus Viewer to POKAYOKE plus will enable interactive communications.

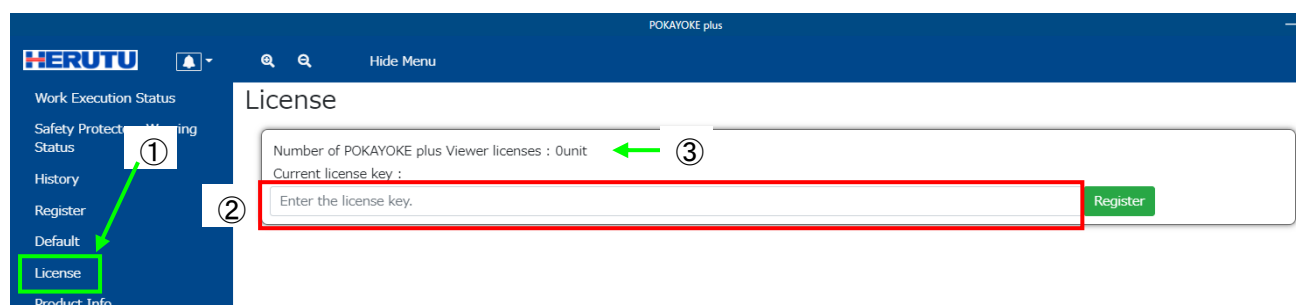
To use POKAYOKE plus Viewer, you need to purchase one license for each POKAYOKE plus Viewer. When you purchase licenses, a document containing a license key*1 will be issued. Enter the license key described on the document into POKAYOKE plus.

Up to 16 licenses can be registered to one POKAYOKE plus.

When you use POKAYOKE plus Viewer for the first time or when you need to add licenses, be sure to perform license registration.

*1: The document containing a license key is enclosed in the CD-ROM bag. A license key is a character string in the format of “XXXXX-XXXXX-XXXXX-XXXXX-XXXXX”.

Start POKAYOKE plus and click “License” (①) on the menu.

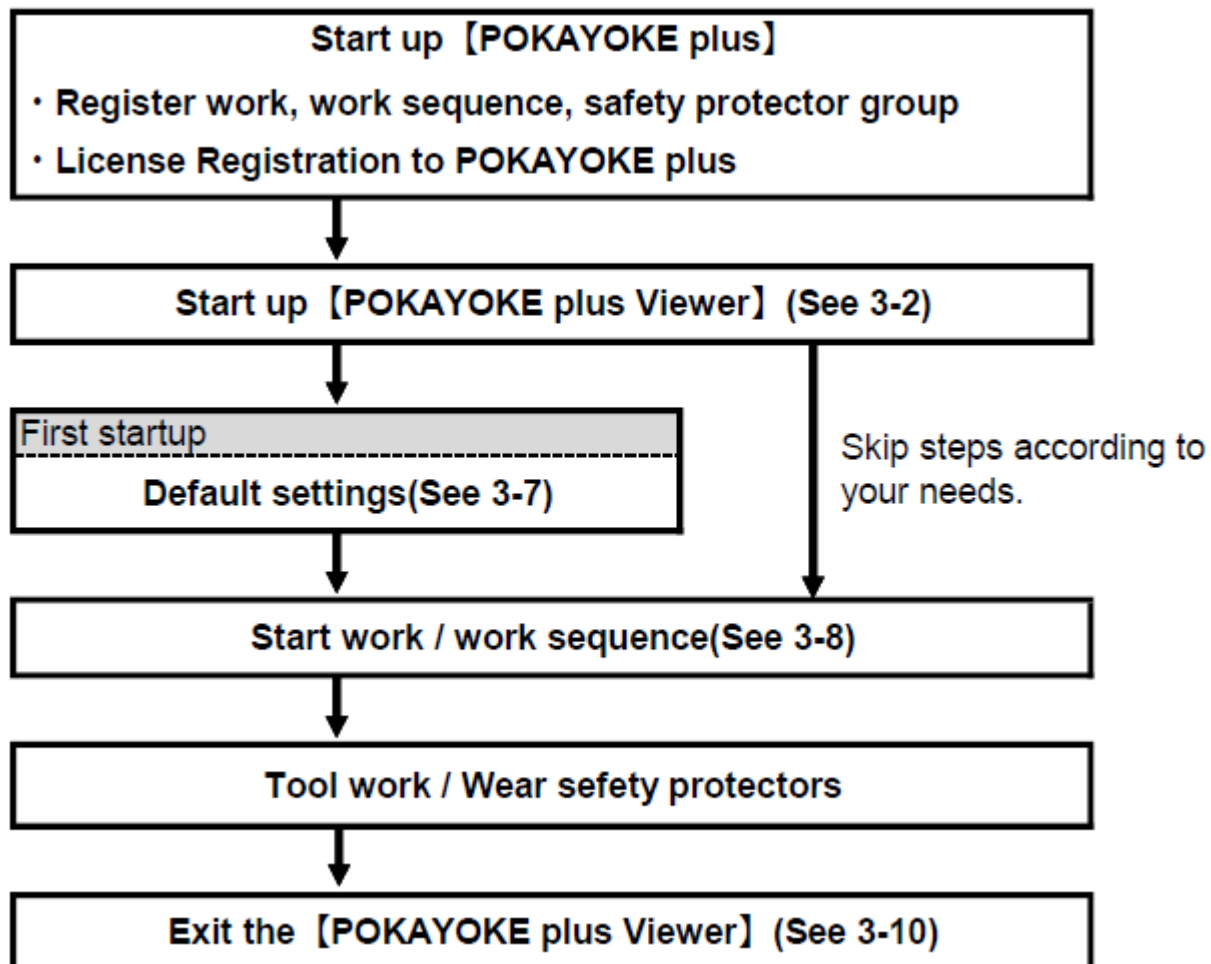


Enter the issued license key in “Current license key” (②) and click “Register” button.

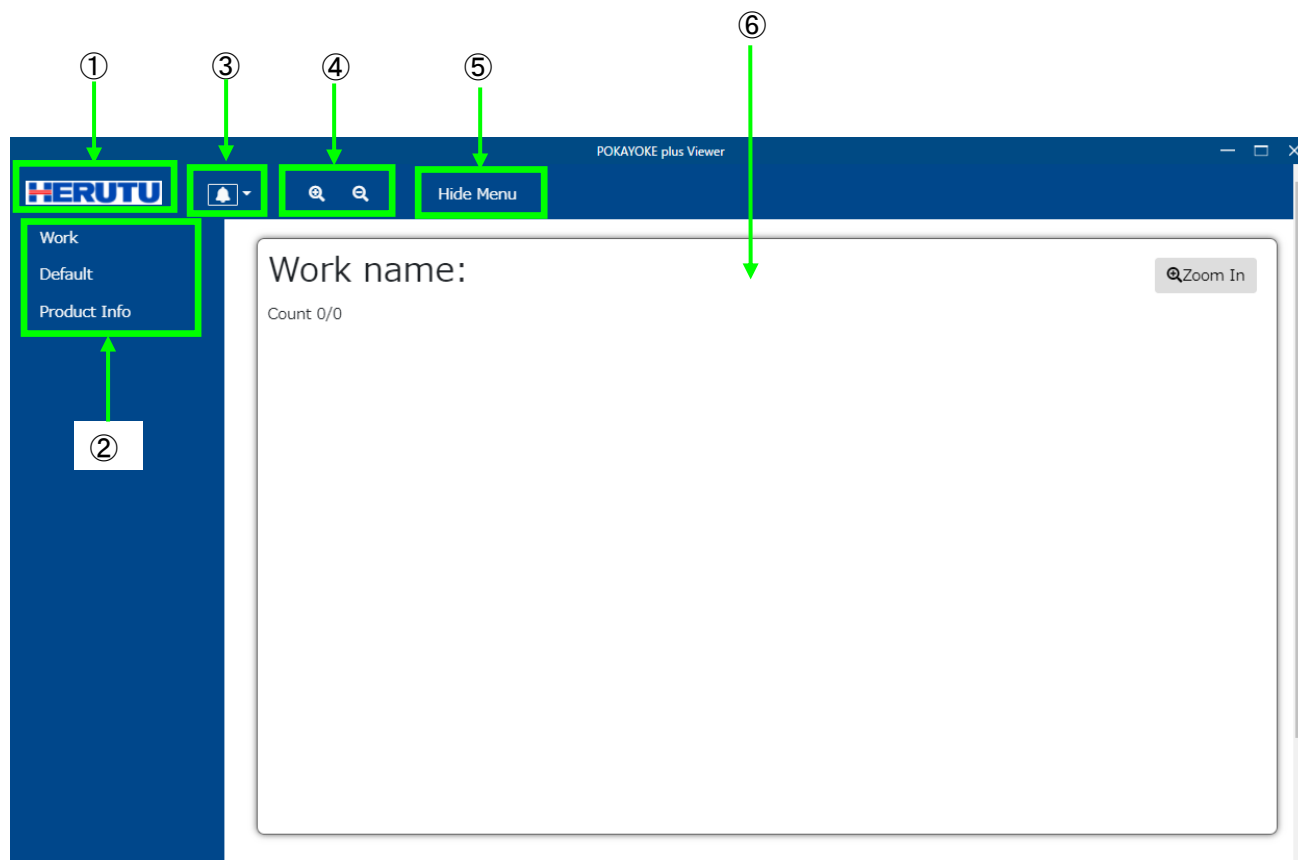
Make sure that the number of the purchased licenses is added to the number of POKAYOKE plus Viewer licenses (③).


3-4. Flow of POKAYOKE plus Viewer

To use POKAYOKE plus Viewer, need to make various settings such as work, work sequence, and safety protector group registration to POKAYOKE plus. For details of POKAYOKE plus, refer to "POKAYOKE plus Instruction manual".



3-5. Screen Configuration



Item name	Description
①HERUTU logo	Click this to display the “Work execution status” screen.
②Menu	Select a menu item.
③Notifications	<p>Messages, such as error information, are displayed. When a notification occurs, the number of messages is displayed on the top left of the bell icon. </p> <p>Click this to check the details of the notifications. For details of the messages, refer to “4. Troubleshooting”.</p>
④Zooming	To zoom in or out the screen.
⑤Display/hide menu	To hide or display the menu.
⑥Main screen	This is a main screen.

3-6. Menu Configuration

【Work】 The contents of tasks (count) are displayed.

【Default setting】 To configure the default settings of the application. Be sure to configure the default settings at first startup.

【Product Info】 The product information (e.g. application version) can be viewed.

3-7. Default Settings

Click [Default] in the menu to display the default settings screen.

◆Tools

Click the “Tools” tab.

Default Settings

The screenshot shows the 'Default Settings' window with the 'Tools' tab selected. The settings are as follows:



Setting	Value
Viewer name	Enter a viewer name.
Buzzer sounds for PASS judgment	ON
Buzzer type for PASS judgment	Buzzer1
Buzzer sounds for FAIL judgment	ON
Buzzer type for FAIL judgment	Buzzer2

A blue 'Setting' button is located at the bottom right of the settings area.

To save the settings in this screen, click the Setting button on the bottom right of the screen.

When moving to another screen without clicking the Setting button, the entries made on the Default settings screen will be lost.

Item	Description	Setting value
Viewer name	You can set a name to POKAYOKE plus Viewer. (Maximum 16 characters)	Input example: ASSY process A
	It is easy to identify when selecting the POKAYOKE plus Viewer to send the work execution instruction from among multiple POKAYOKE plus Viewer. For more details, refer to “ <u>Select POKAYOKE plus Viewer in POKAYOKE plus</u> ”.	
Buzzer sounds for PASS judgment	When the number of tasks completed reaches a specified count, a “PASS” is assigned. Set whether or not to sound the buzzer from the PC equipped with the POKAYOKE plus Viewer.	ON (default) OFF

Buzzer type for PASS judgment	Set the buzzer sound for notification of PASS result. Select a buzzer sound from five types. You can hear the buzzer sounds after clicking  displayed on the right.	Buzzer1 (default) Buzzer2 Buzzer3 Buzzer4 Buzzer5
Buzzer sounds for FAIL judgment	When tasks are not executed according to the execution instructions set in work registration, or when there are remaining counts at the input of the judgment signal, the work is judged as FAIL. Set whether or not to sound the buzzer from the PC equipped with the POKAYOKE plus Viewer.	ON (default) OFF
Buzzer type for FAIL judgment	Set the buzzer sound for notification of FAIL result. Select a buzzer sound from five types. You can hear the buzzer sounds after clicking  displayed on the right.	Buzzer1 Buzzer2 (default) Buzzer3 Buzzer4 Buzzer5


◆Safety protectors

Click the “Safety protectors” tab.

Default Settings

Tools **Safety protectors** Common


Buzzer sounds when the safety protector wearing status is NG. ☒ ON ☐ OFF

Buzzer type when the safety protector wearing status is NG. Buzzer1 ▾ 

[Setting](#)

To save the settings in this screen, click the Setting button on the bottom right of the screen.

When moving to another screen without clicking the Setting button, the entries made on the Default settings screen will be lost.

Item	Description	Setting value
Buzzer sounds when the safety protector wearing status is NG	Set whether or not to sound the buzzer when safety protectors are not worn correctly from the PC with POKAYOKE plus Viewer installed.	ON (default) OFF
Buzzer type when the safety protector wearing status is NG	Set the buzzer sound for when safety protectors are not worn correctly. Select a buzzer sound from five types. You can hear the buzzer sounds after clicking  displayed on the right.	Buzzer1 (default) Buzzer2 Buzzer3 Buzzer4 Buzzer5

◆Common

Click the “Common” tab.

Default Settings

Tools Safety protectors **Common**

Language

English

The POKAYOKE plus to be connected

IP:192.168.251.32 Port:63753

Search

Network adapters

IP:192.168.251.32

Setting

Item	Description	Setting value
Language	Select a language to be displayed in POKAYOKE plus.	Japanese English (default)
The POKAYOKE plus to be connected	Click “Search” button and the IP address of the connectable POKAYOKE plus is displayed. *This must be done when POKAYOKE plus is running.	-
Network adapters	Select a network adapter to communicate with POKAYOKE plus. For details, contact the network administrator.	Your IP address is displayed in the selection list.

3-8. Start a Work or Work Sequence

Before starting a work, you need to register the work to POKAYOKE plus.

For details of work registration or work sequence registration, refer to “POKAYOKE plus Instruction manual”.

Start a work in POKAYOKE plus

[POKAYOKE plus] Click “Register work” on the menu and open the Work registration screen.

POKAYOKE plus

HERUTU

Work Execution Status
Safety Protectors Wearing Status
History
Register
Register Receiver
I/O unit registration
Register POKAYOKE Tools
Tools
Register Work
Register Work Sequence
Safety Protectors
Register Group

Register work

Filtering conditions

Work No. Work name
Tool name Transmitter ID
Tool Sequence

Register work (Register a new work.)

10

	Start	Copy	Work No.	Work name	Tool seq...	Tool1	Tool2	Tool3	Tool4	Tool5	Too
+	Start	Copy		Large Unit AD ASSY	ON	Torque Wrench	Impact Driver	Torque Driver	Plier Wrench	Marking Pen 1	Mar 2
+	Start	Copy		Engine Assembly	ON	Electric Tool	Torque Wrench	Pliers Wrench			

Click “Start” button for the work you want to display in POKAYOKE plus Viewer.

Enter the work execution count. (Task instructions are repeated for the execution count.)

Enter an execution count. (Task instructions are repeated for the execution count.)

Count

OK Cancel

A work sequence and the safety protector group being monitored can be linked. The tool work status and the safety protector wearing status are displayed on the same screen. You can keep track of “Whether or not safety protectors are worn correctly by workers executing tasks with tools”. Select a desired safety protector group. (Safety protector group that are already associated with another work sequence will not be displayed.)

Select the safety protector group to interface with the work sequence.

Safety protector groups

OK Cancel

Start a work sequence in POKAYOKE plus

[POKAYOKE plus] Click “Register Work Sequence” on the menu and open the Register Work Sequence.

POKAYOKE plus

HERUTU

Work Execution Status
Safety Protectors Wearing Status
History
Register
Register Receiver
I/O unit registration
Register POKAYOKE Tools
Tools
Register Work
Register Work Sequence

Register Work Sequence

Filtering conditions

Work sequence name: Enter the work sequence name to be searched for.
Transmitter ID: Enter the transmitter ID to be searched for.
Work name: Enter the work name to be searched for.
Tool name: Enter the tool name to be searched for.

Register Work Sequence (Register a new work sequence.)

Work sequence (Delete the marked work sequence(s).)

10

	Start	Copy	Work sequence name	Work1	Work2	Work3	Work4	Work5
+	Start	Copy	Large Unit AD ASSY	Large Unit AD ASSY				
+	Start	Copy	Engine Assembly	Engine Assembly				

Click “Start” button for the work sequence you want to display in POKAYOKE plus Viewer.

A work sequence and the safety protector group being monitored can be linked. The tool work status and the safety protector wearing status are displayed on the same screen. You can keep track of “Whether or not safety protectors are worn correctly by workers executing tasks with tools”. Select a desired safety protector group. (Safety protector group that are already associated with another work sequence will not be displayed.)

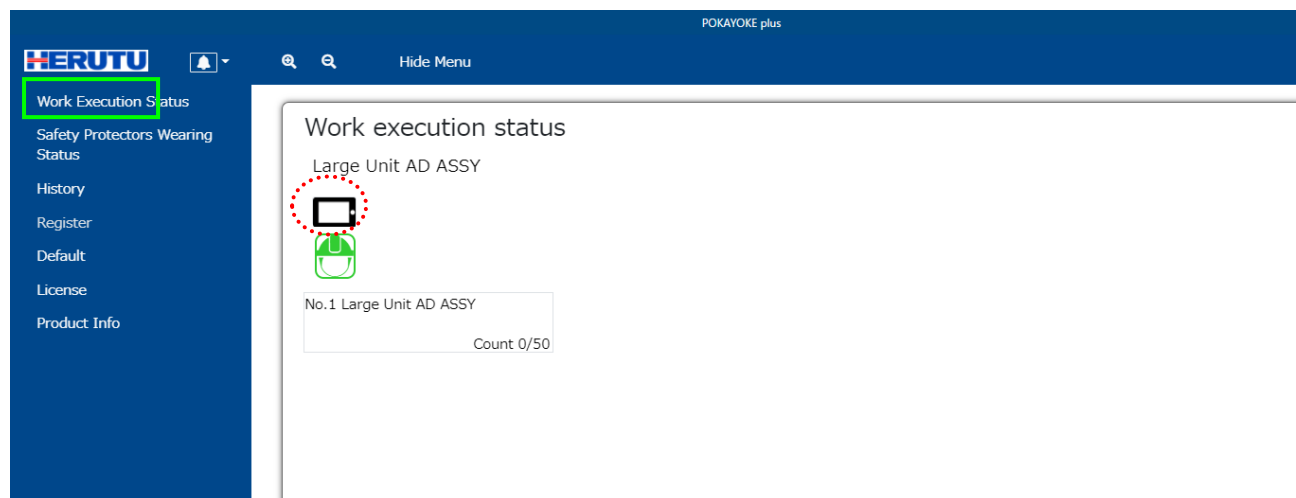
Select the safety protector group to interface with the work sequence.


Safety protector groups
Not selected.

OK Cancel

Select POKAYOKE plus Viewer in POKAYOKE plus

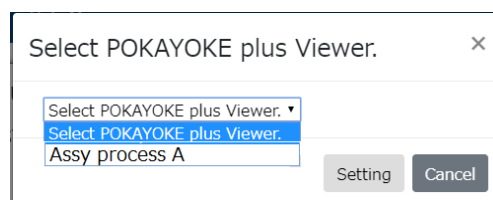
[POKAYOKE plus] Click “Work execution status” and open the Work execution status screen.




When TW-8##R-EXL is used, a display icon () is displayed below the name of the work sequence.

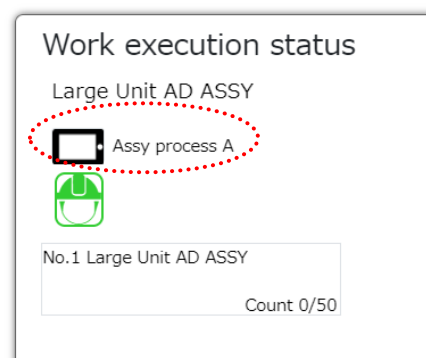
Click the icon and the connected POKAYOKE plus Viewer is displayed.

Select your desired POKAYOKE plus Viewer and click “Setting” button.



The viewer name of POKAYOKE plus Viewer is displayed next to the display icon, and work execution instructions are sent to the POKAYOKE plus Viewer.

To reset the set POKAYOKE plus Viewer, click the display icon (), select “Select POKAYOKE plus Viewer” and click “Setting” button.



Display the Work execution screen in POKAYOKE plus Viewer

Click "Work" on the menu and open the Work execution screen.

"Production number / set execution count" is displayed. The work order is repeated until the set number of times is reached.

*The production number is the number of works whose judgment result is PASS. If

"Finish the work in execution." is selected when FAIL occurs, it will not be counted.

When the task of the tool is completed,
the tool is displayed in blue frame.

Tool during task

Work name: Large Unit AD ASSY

Count 0/3

No.	Tool Name	Count Value	Spec. Value
No.1	Torque Wrench	0	6
No.2	Impact Driver	0	6
No.3	Torque Driver	3	5
No.4	Plier Wrench	2	2
No.5	Marking Pen 1	6	6
No.6	Marking Pen 2	5	5
No.7	Stamp X-BKL	1	1

Indication of low battery

Count value (Task count)

Specified count

Tool name

When Tool sequence is ON, execute the tasks in increasing order from No. 1.

When Tool sequence is OFF, No. is not displayed.

Each time a task is executed, "Count value" counts up or down.

When the task is executed as much as the specified count, the task is judged as PASS and the frame of the tool and the count value (task count) turn blue.

When linked with the safety protector group, the wearing status of the safety protectors is indicated by the icon color. (Even if one person becomes NG, the icon color turns to red.)

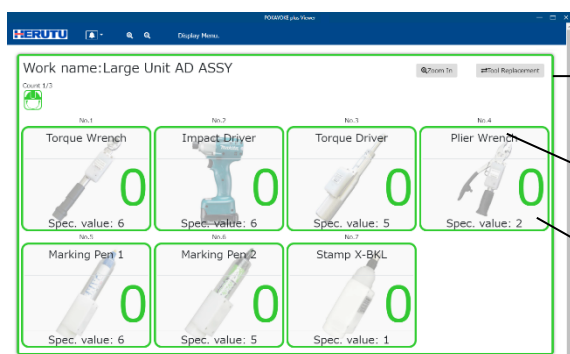


Color	Status
Black	Ready(off hours)
Green	Wearing status is OK
Red	Wearing status is NG
Gray	All tools in the safety protector group are temporarily stopped. (*2)

(*2) Monitoring is not performed in a temporary stop state even during the working hours, and the wearing history is not recorded. An alert is not generated even after change of the wearing status from OK to NG. Use POKAYOKE plus to stop the temporary stop state.

Task is completed (PASS)

When all tasks are completed and they are judged as PASS, the frame of each tool, the count value and the outer frame of the whole work turn green.



Outer frame of the whole work

Frame of the tool

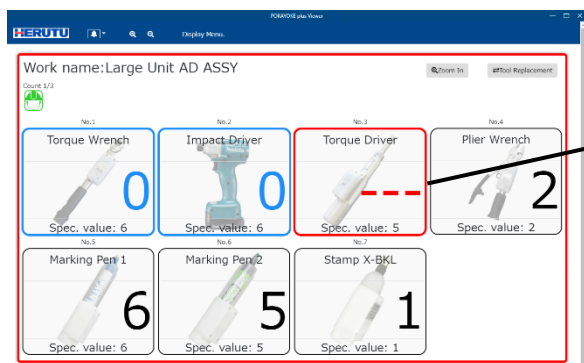
Count value

FAIL occurs

When FAIL occurs, the frame of the tool during task execution, the count value and the outer frame of the whole work turn red.

【FAIL factors】

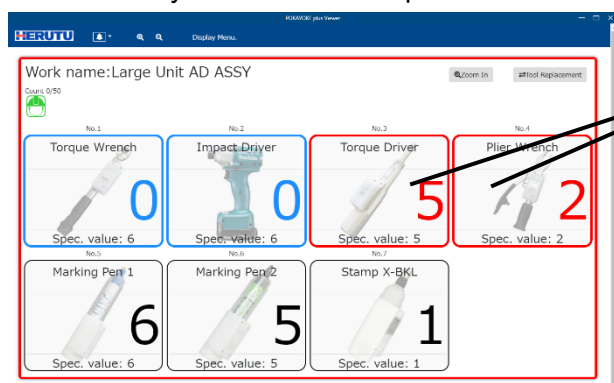
- Over-count: Occurs when the task is executed more than the specified count.



When over-count occurs, the count value is displayed as "---".
(When over-count is permitted, it is not judged as FAIL.)

- Tool sequence error: Occurs when the tasks of the tools are executed in the wrong sequence.

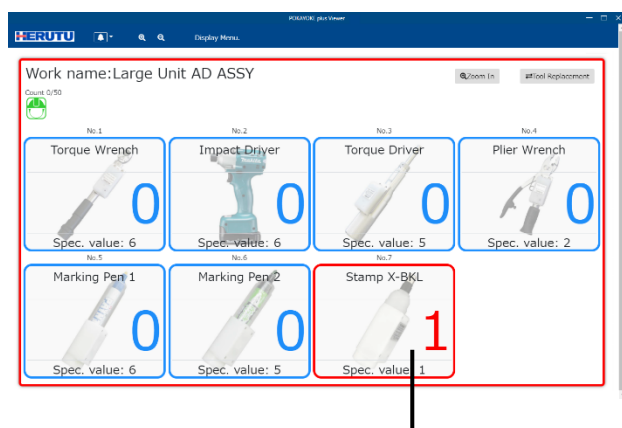
*It occurs only when the tool sequence is ON.



Example) When executing the task with No.4 "Plier Wrench" without executing the task with No.3 "Torque Driver".

When the tasks are executed in the wrong sequence, the frames of the target tools and the count values turn red.

- Remaining count error: Occurs when a judgment input is provided when the task is not executed as much as the specified count.



Example) Judged and entered when the task with No.6 "Marking Pen 2" is completed (remaining task is left)

The tools used for the tasks that are not completed will be displayed in red.

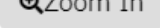
When FAIL occurs, the following message is displayed and the task is temporarily interrupted. Click "Confirm" button and FAIL will be reset.

Set whether to terminate the work by reset input from POKAYOKE plus Viewer or to continue the work according to "Processing method for reset input" in [Default settings]/[Tools].

FAIL occurred.

Work sequence name	Large Unit AD ASSY
Work name	Large Unit AD ASSY
Cause of FAIL	Over-count

Enlarge the tool in operation

When Tool sequence for the work is set to “ON”, clicking  will display only the tool in operation in enlarged form. Use this function to display the count values larger at the task site.

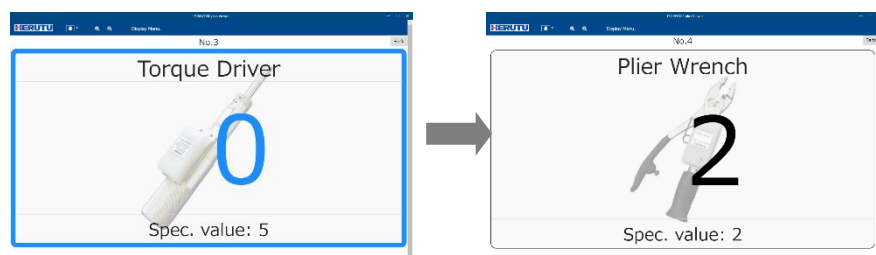
* When Tool sequence for the work is set to “OFF”, this function cannot be used.



Click “Return” button to return to the original screen.

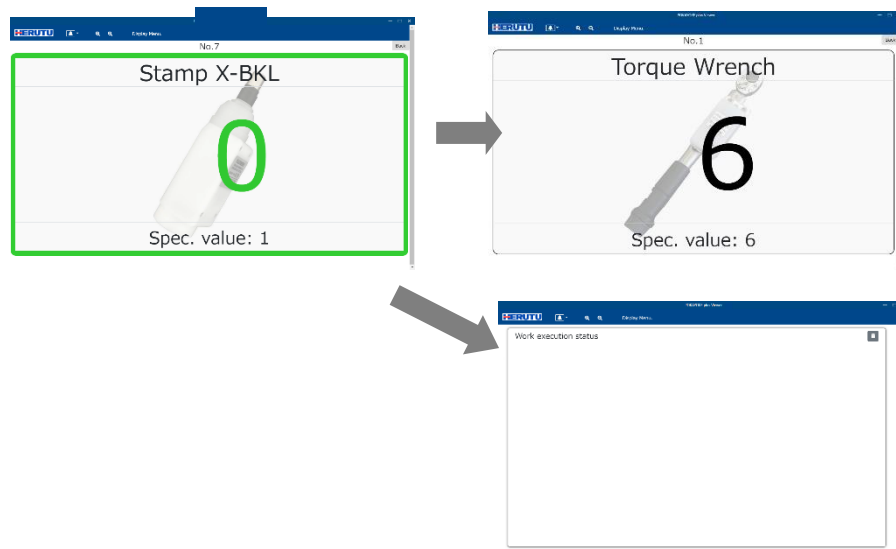
Click “Hide menu” to display the count in the full screen.

For multiple tools are used for one work, when the task with each tool is completed, the outer frame and the count value turn blue. After the reset timer has elapsed, the counter display changes to the count for the next tool.



Task is completed (PASS)

When PASS judgment is made, the outer frame and the count value turn green.



When the next work is set to be executed, after the reset timer has elapsed, the counter display changes to the count for the next work.

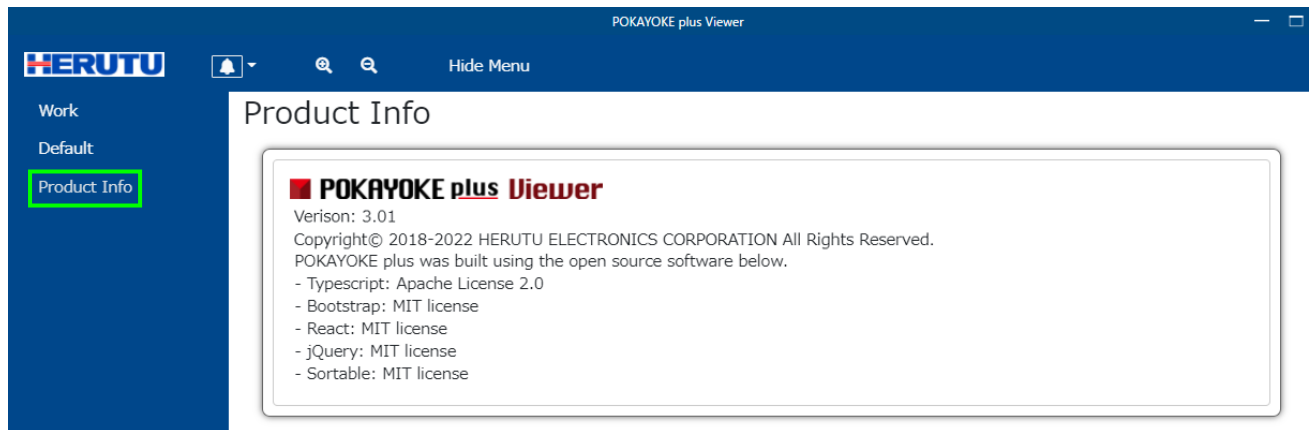
If there is no more work to be executed, after the reset timer has elapsed, the screen is switched to the initial screen.

FAIL occurs

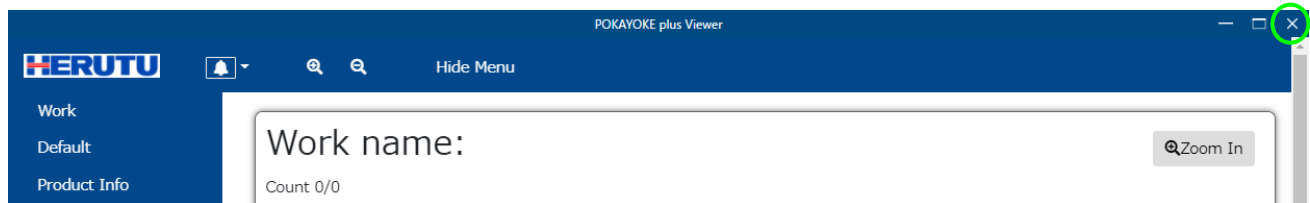
When FAIL occurs, the outer frame and the count value turn red.

3-9. Product Information

The application information, including the version information, can be checked.



3-10. Exit POKAYOKE plus



Click “X” on the top right of the screen, and a message **“Do you want to exit?”** is displayed. Click “OK” and the application exits.

(This message uses Windows functions, the language of the “OK”, “Yes”, “No” and “Cancel” buttons depends on the language set in the OS.)

4. Troubleshooting

Error messages or symptoms	Cause and remedy
POKAYOKE plus is not searched for even by clicking the Search button for "The POKAYOKE plus to be connected" on Default settings.	<p>The possible cause is as below:</p> <ul style="list-style-type: none"> • A license key is not registered to POKAYOKE plus. Check the number of possessed licenses in POKAYOKE plus. • POKAYOKE plus does not start up. • The LAN cable is disconnected. • The network settings of the computer with POKAYOKE plus or POKAYOKE plus Viewer are incorrect. • The POKAYOKE plus and POKAYOKE plus Viewer versions may be different. Please use the same version POKAYOKE plus Viewer as POKAYOKE plus. The application version can be displayed by clicking "Product Info" in the menu.

Is one of the following messages displayed in the notification of POKAYOKE plus Viewer?

Message	Cause and remedy
Connection to POKAYOKE plus has failed.	<ul style="list-style-type: none"> • Network may be busy. Try again later. • The number of connections to the PC running POKAYOKE plus has reached the maximum. No more connections can be made to the PC. • The LAN cable is disconnected.
<p>The maximum number of POKAYOKE plus Viewer licenses is exceeded.</p> <p>Connection to POKAYOKE plus cannot be made.</p> <p>(Number of licenses : *)</p>	<p>The number of possessed licenses has been exceeded.</p> <p>To connect more computers to POKAYOKE plus, additional license purchase of POKAYOKE plus Viewer is necessary.</p>



HERUTU ELECTRONICS CORPORATION

422-1 Higashimikata-cho, Kita-ku, Hamamatsu, Shizuoka, 433-8104 Japan

(Sales dept) TEL. +81-053-438-3555 FAX. +81-53-438-3411

Website URL <https://www.herutu.co.jp/en/> E-mail info@herutu.co.jp