

Industrial Remote Control Connection Examples

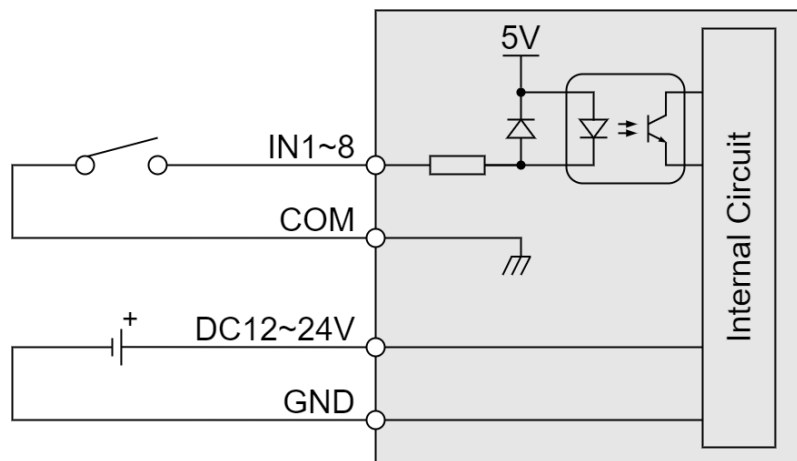
Contact Transmitter
TC-242TF / TC-248TF

Receiver
RC-242RF / RC-248RF

1. Contact Transmitter (TC-242TF / TC-248TF)

Please connect to an input terminal stand the non-voltage point of contact which "DC5V/20mA" can stabilize for which and turn on and off.

Please input the input signal as 50 ms or more. Moreover, the next signal input should end 200 ms or more, after the last signal is come by off.



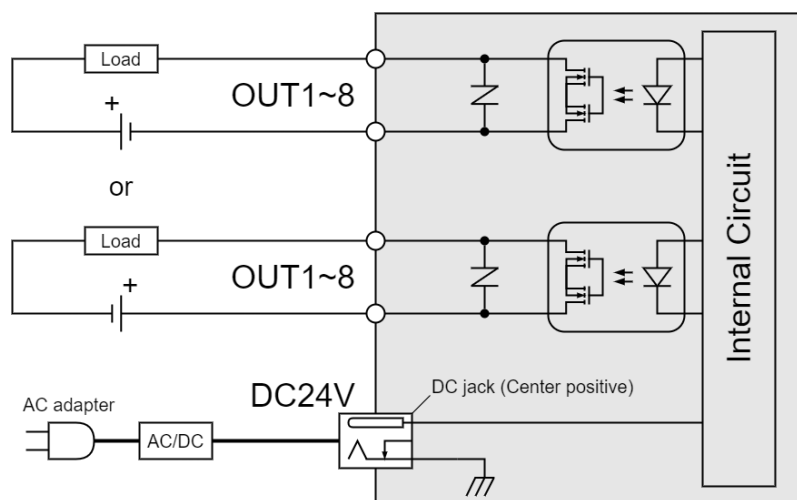
Input
Non-voltage Contact Input Contact Capacity: DC5V 20mA

Power Supply
DC12~24V±10%

2. Receiver (RC-242RF / RC-248RF)

Output turns on with relay contact. Once output turns on, short-circuited condition is made between terminals.

Once the rated contact load is exceeded, inner circuit might be damaged. Use an extreme care.



Output
Contact Output Max. Rated Load: AC/DC30V 0.5A

Power Supply
DC24V±20% AC adapter included: AC100~240V

⚠ Caution

When controlling inductive loads (e.g., lamps, relays), provide protection against inrush current and surge voltage.